

Component Replacement

- electrical -



Xperia Z1™

C6902, C6903, C6906, C6943, LT39h

CONTENTS

1 Replaceable Components 3

2 Component Placing..... 5

3 Additional Repair info 6

4 Revision History 11

For general information about electrical repair related issues, refer to 1220-1336: Generic Repair Manual - electrical

Test after electrical replacement: refer to 1273-1772 Mechanical Test Instruction

Do not remove shield can lids (Heat pasta are added and RF performance will be damaged)

1 Replaceable Components

EXPLANATION OF ABBREVIATIONS USED IN THE COLUMN 'COMMENTS' BELOW

COMPONENT LOCATION

P = Primary side

S = Secondary side

REPAIR METHOD

HA = Hot Air (removal & mounting)

ST = Soldering Tool (removal & mounting)

HA/ST = Hot Air for removal - Soldering Tool for mounting

BGA = BGA Station

BH = Bottom Heater

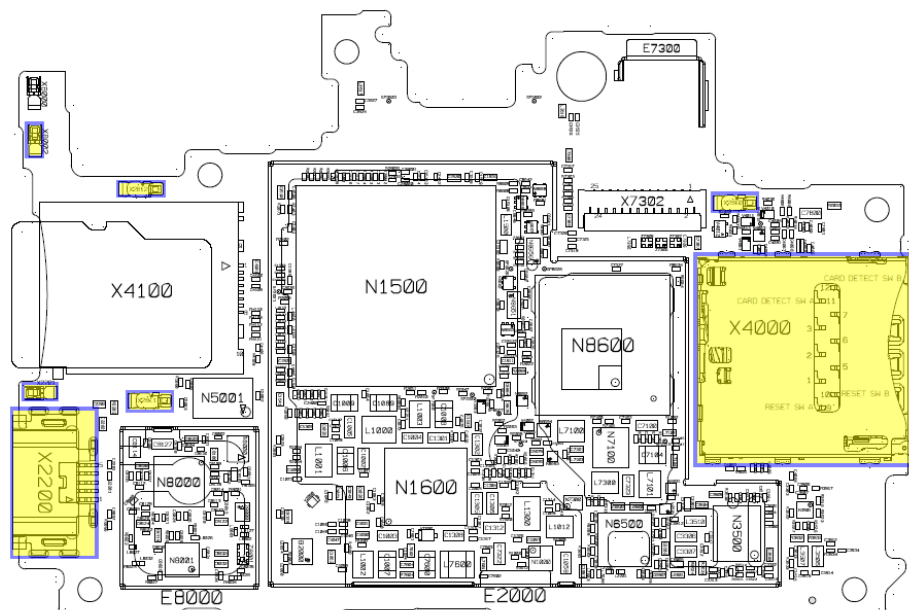
ADDITIONAL INFORMATION

⇒1 (2,3,4, etc.) = Proceed to 'Additional Repair Info' for further instructions in the indicated section(s).

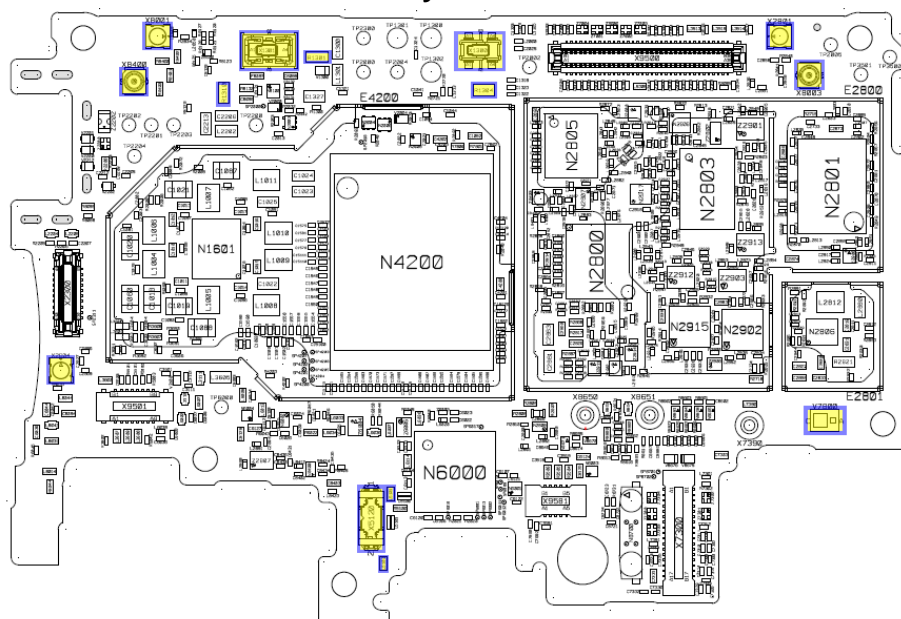
Position	Component	Part no.	Comments
L5101	Ferrite B 1.8 kOhm	1237-6064	S HA+BH ⇒1
L5102	Ferrite B 1.8 kOhm	1237-6064	S HA+BH ⇒1
R1301	Resistor 0.0 Ohm +/-50m 63.0 mW K0603	1000-0257	S HA+BH ⇒2
R1304	Resistor 0.01 Ohm +/-1% 200.0 mW (1.6x0.	1238-2147	S HA+BH ⇒3
R1310	Resistor 0.0 Ohm +/-50m 63.0 mW K0603	1000-0257	S HA+BH ⇒2
V7800	LED White 1.63 x 2.03 x 0.75 mm Flash LE	1267-1941	S HA+BH ⇒4
X1300	Conn BtB Plug 4p HIROSE/BM22	1264-8491	S HA+BH ⇒5
X1301	Conn BtB Receptacle 4p HIROSE/BM22	1264-6156	S HA+BH ⇒6
X2200	Conn USB B Receptacle 5p	1268-3388	P HA+BH or BGA ⇒7
X2201	Conn Leaf Spring Plug 1p	1271-9649	P HA+BH ⇒8
X2801	Conn Coax Receptacle 1p	1237-5326	S HA+BH ⇒9
X2804	Conn Coax Receptacle 1p	1237-5326	S HA+BH ⇒10
X2810	Conn Leaf Spring Receptacle 1p Antenna/G	1238-5879	P HA+BH ⇒11
X2811	Conn Leaf Spring Receptacle 1p Antenna/G	1238-5879	P HA+BH ⇒8
X2812	Conn Leaf Spring Receptacle 1p Antenna/G	1238-5879	P HA+BH ⇒8
X4000	Card Conn SIM	1271-9742	P HA+BH or BGA ⇒12
X5120	Conn WtB Receptacle 2p	1206-4855	S HA+BH ⇒13
X8001	Conn Coax Receptacle 1p	1237-5326	S HA+BH ⇒14
X8002	Conn Leaf Spring Plug 1p	1271-9649	P HA+BH ⇒15
X8003	Conn Coax Receptacle 1p	1261-3585	S HA+BH ⇒16
X8400	Conn Coax Receptacle 1p	1261-3585	S HA+BH ⇒17

2 Component Placing

To access the Component Placing document, double-click the icon below.
Applicable for on-screen viewing only – icon not shown on hard-copies.



Primary side



Secondary side

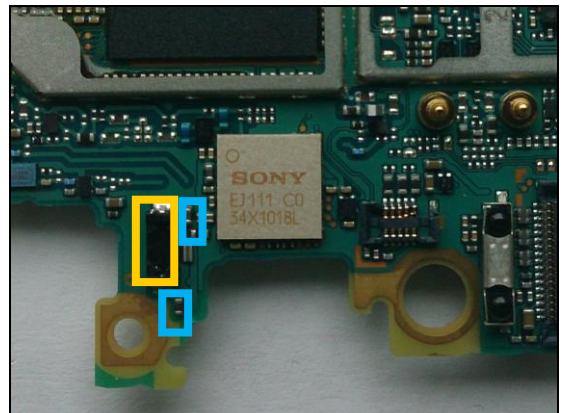
3 Additional Repair info

1

L5101, L5102

Replace if open circuit (Vibrator not working)

Protect the BtB connector with capton tape!

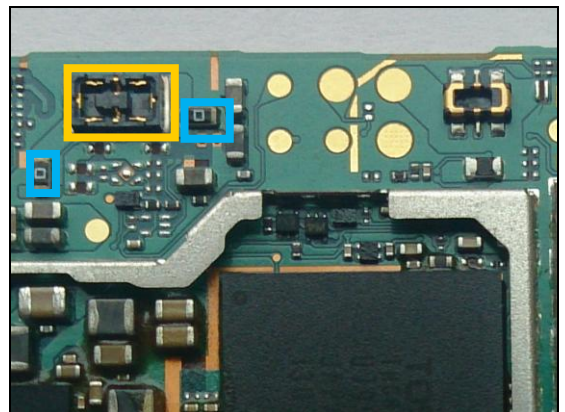


2

R1301, R1310

Replace if open circuit (Magnet charger not working)

Protect the BtB connector with capton tape!

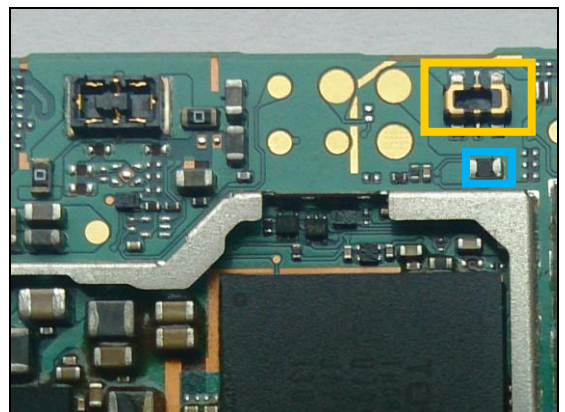


3

R1304

Replace if open circuit (Phone Dead)

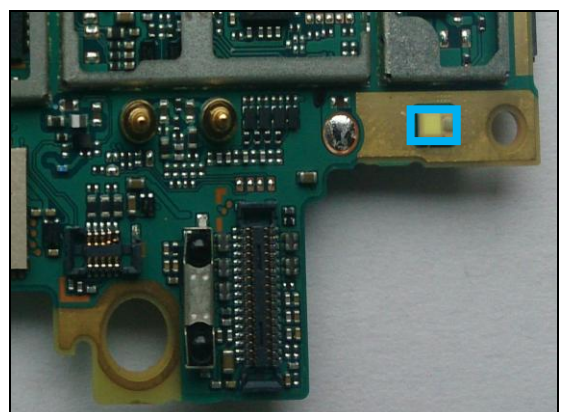
Protect the BtB connector with capton tape!



4

V7800

Replace if Flash LED not working

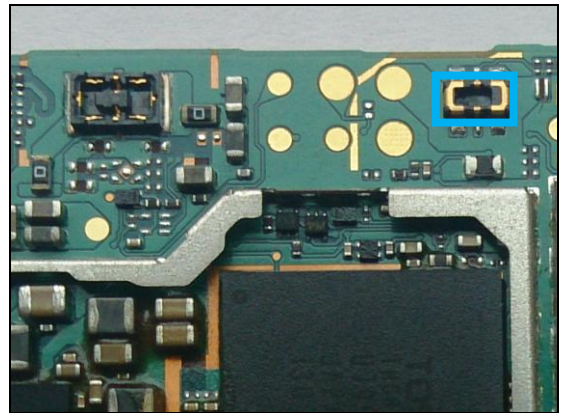


Repair Actions: Additional Repair Info

5

X1300

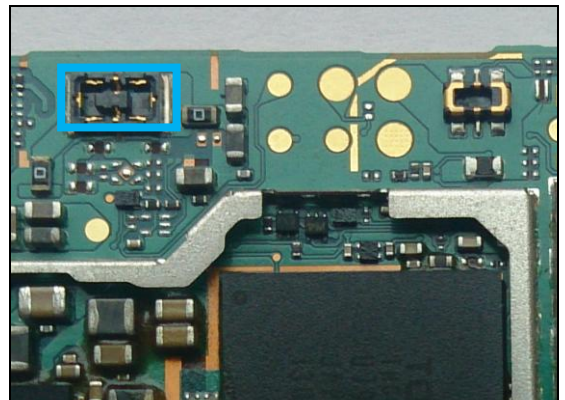
Replace if mechanical damaged. (Phone dead or power off)



6

X1301

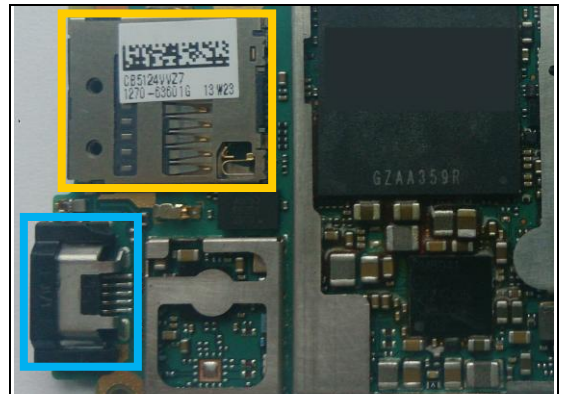
Replace if mechanical damaged. (Magnet charger not working)



7

X2200

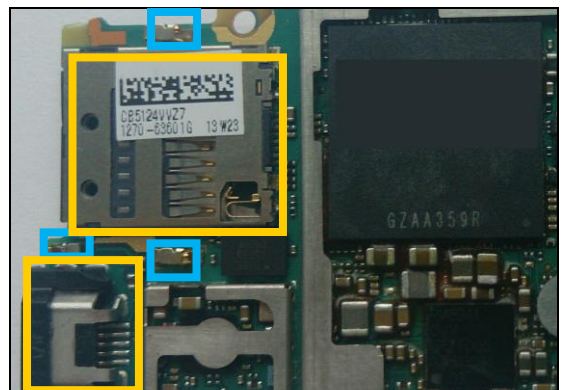
Replace if mechanical damaged (USB charger or data transfer not working)



8

X2201, X2211, X2212

**Replace if mechanical damaged (Grounding Pins)
Protect the SD and USB connectors with capton tape!**



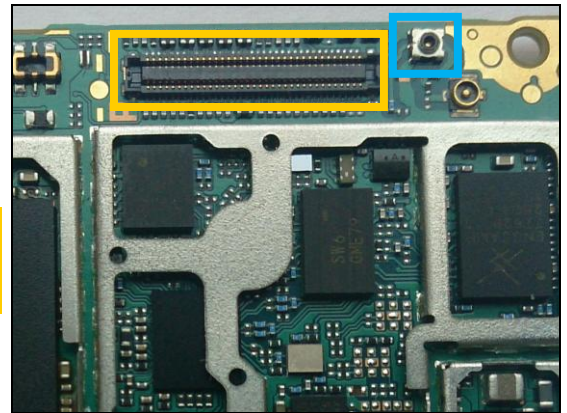
Repair Actions: Additional Repair Info

9

X2801

Replace if open circuit 1-2 (No or bad network, main antenna)

Protect the BtB connector with capton tape!

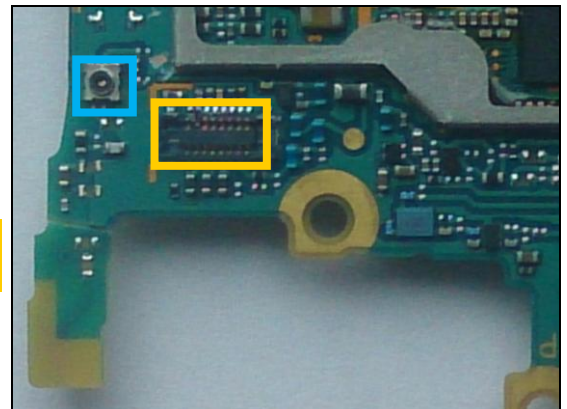


10

X2804

Replace if open circuit

Protect the BtB connector with capton tape!

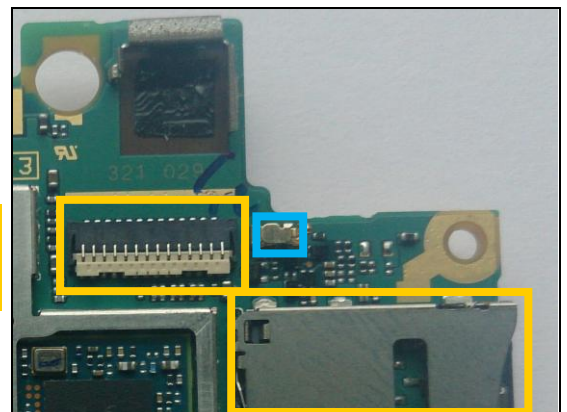


11

X2810

Replace if mechanical damaged (Grounding Pin)

Protect the SIM card and BtB connectors with capton tape!

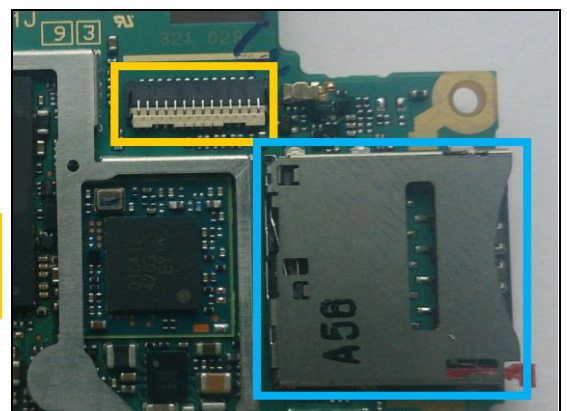


12

X4000

Replace if mechanical damaged (No network, restart, No SIM card inserted)

Protect the BtB connector with capton tape!

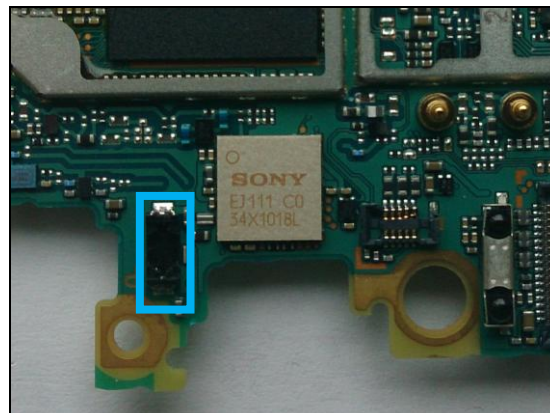


Repair Actions: Additional Repair Info

13

X5120

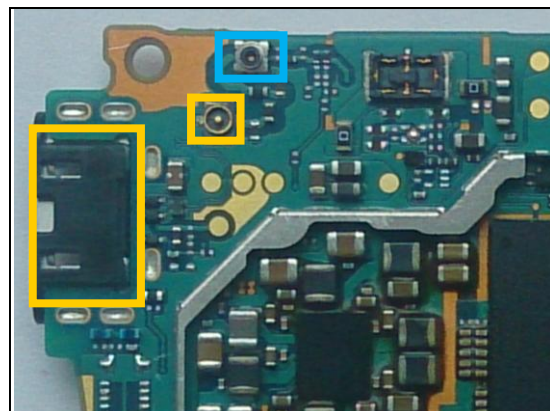
Replace if mechanical damaged (Vibrator not working)



14

X8001

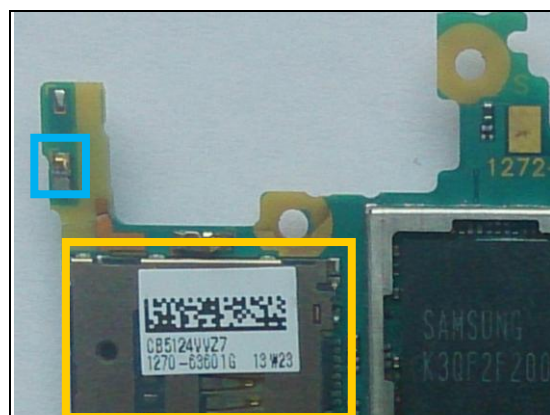
**Replace if open circuit 1-2 (no or bad WLAN/ BT)
Protect the USB and Coax connectors with capton tape!**



15

X8002

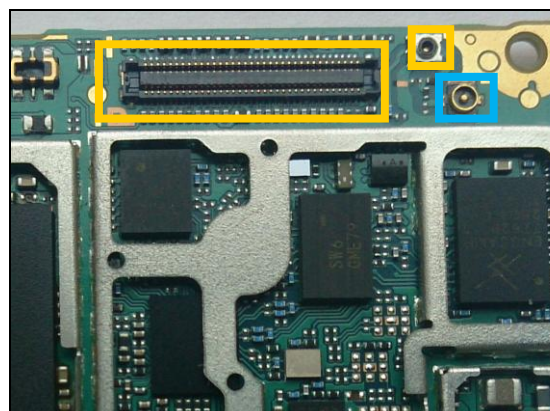
**Replace if mechanical damaged (No or bad GPS)
Protect the SD connector with capton tape!**



16

X8003

**Replace if mechanical damaged (No or bad network,
main antenna)
Protect the BtB and Coax connectors with capton tape!**

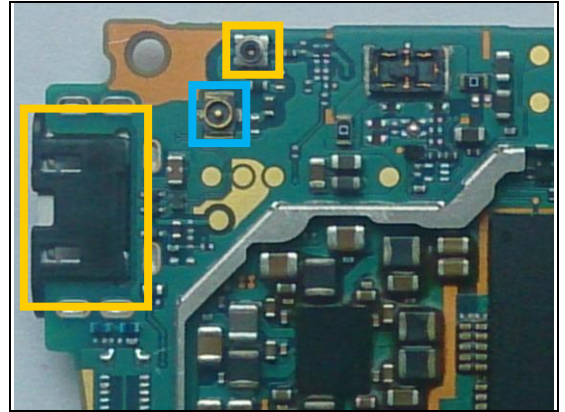


Repair Actions: Additional Repair Info

17

X8400

**Replace if mechanical damaged (no or bad WLAN/ BT)
Protect the USB and Coax connectors with capton tape!**



4 Revision History

Rev.	Date	Changes / Comments
1	2014-04-16	Initial release